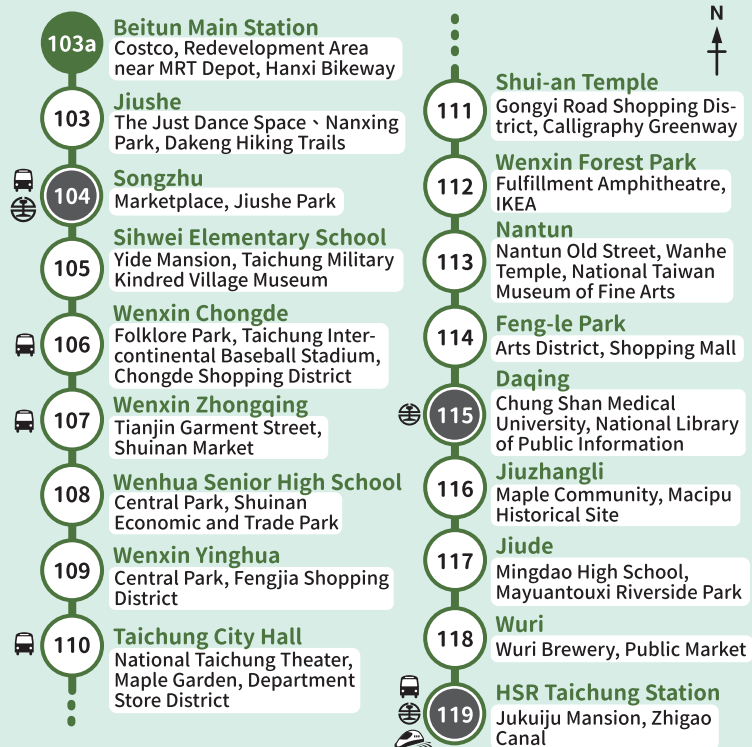


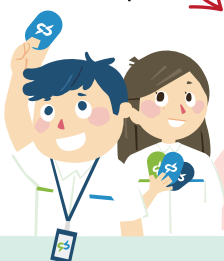
TMRT Route Map and Nearby Attractions



This brochure can be folded crosswise for convenient carrying (TMRT is committed to carbon reduction, deduct 25% paper than traditional brochures)

Ticket Types

- Available ticket types :**
 - Stored Value Cards (EasyCard, iPASS, icash2.0)
 - Selected credit cards and mobile payment options, selected electronic and third-party payment services.
 - TPASS, Taichung City MaaS Time-Based Passes
- We have the following ticket types for sale :**
 - Travel Passes : One Day (\$120), 24 hrs (\$150), 48 hrs (\$250)
 - Single-journey tickets, concession single-journey tickets for the elderly and disabled ; Group tickets for 10+ passengers ; Special tickets for bicycle or double bass transport.



Concession single-journey tickets for the elderly and disabled

The elderly aged 65+ must present original national ID card; Persons with disabilities and one necessary companion must present valid disability certificate to purchase concession tickets. Concession tickets are 50% off general ticket fares.

Social Welfare Benefits

- The following cardholders enjoy 50% fare discount when taking the TMRT :**
 - Elderly :** Taiwan nationals aged 65+, holding Senior Citizen Card.
 - Persons with disabilities :** Taiwan nationals with Disability Certificate or Senior Citizen Card.
 - Indigenous people :** Registered Taichung City residents aged 55+, holding Senior Citizen Card.
- ▲ Taichung City Senior Citizen Cards include 1000 monthly points (1500 for indigenous seniors), which can be used for free rides.
- Children :** Registered Taichung City residents aged 6-11, holding Taichung Children's Card.



台中捷運 Operational Information Guide

English Version



Ticket Price and Boarding Time



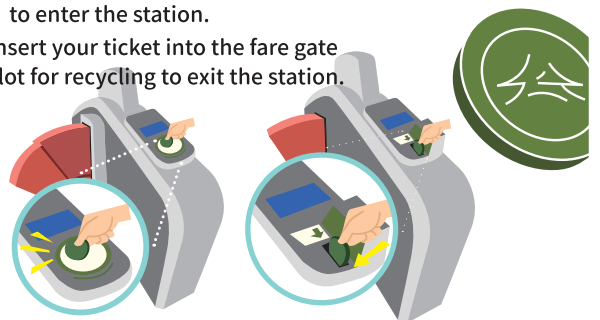
Download our app



Premium MRT, Connecting Happiness ver.2025.04

How to Ride

- Single Journey Ticket Instructions :**
 - Entry :** Simply touch your single journey ticket to the sensor area to enter the station.
 - Exit :** Insert your ticket into the fare gate slot for recycling to exit the station.



Gate Usage Instructions :

- Station Entry / Exit :** Touch a valid card or mobile device, or scan a valid barcode at the designated sensor area to enter or exit.

Sensor Zone :



Payment Methods :



Scan the QR code to view the latest accepted payment methods.

Important Passenger Information

(For complete passenger guidelines, please visit the Taichung MRT official website.)

Free travel for children under 6 :

Children must present identifications and be accompanied by a passenger with a valid ticket to travel free of charge.

Pet Policy :

With the exception of service animals (e.g., police dogs or guide dogs), all pets must be contained in carriers, bags, or cages (combined dimensions of length, width, and height must not exceed 220 cm, with maximum length of 165 cm). Containers must be secure with no possibility of waste leakage, and the animal's head, tail, and limbs must remain completely inside.

Time Limits in Paid Areas :

1. Different entry and exit stations : **90** minutes;
Same entry and exit station : **15** minutes.
2. Passengers exceeding these time limits will be charged the minimum single journey fare in addition to the regular fare.

Prohibited Activities (subject to fines) :



Smoking



Spitting, betel
nut juice/residue



Littering



Eating and drinking
(including water)

TMRT Mascots and Official Merchandise



TMRT's official merchandise features our beloved mascots "Little Greenie, Mo Mo, and Cha Cha" in a range of commemorative and practical items, allowing passengers to take home a piece of their TMRT experience. From souvenirs and fashion accessories to everyday items, our high-quality, thoughtfully designed products appeal to transit enthusiasts of all ages and offer a unique way to connect with Taichung's distinct character.

TMRT Linktree



This platform includes information on associated services, official merchandise catalog, and all content featured in this brochure.

Transit Connection Platform



- YouBike Station Locations
- Taichung Bus Real-time Updates
- Taiwan Railways Timetable
- Taiwan High Speed Rail Timetable

Self-media Platform



- Facebook Fan Page
- Facebook Official Group
- Instagram Profile
- YouTube Channel

TMRT provides excellent activity venues and space

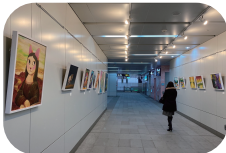
For venue applications and upcoming events, please visit the TMRT official website.



G4 Re-Station

Markets and Events

Station ▶ (Songzhu)



Art Exhibition Space

For paintings, photography,
and other static displays

(Songzhu • Taichung City Hall • Wuri)



The Just Dance Space

For dance practice and
activities

(Jiushe)

Your Exclusive Taichung Memories

Service Applications

- TMRT Group Visit Requests
- Photography and Filming Permits
- Public Service Advertising Space Requests
- Public Welfare Publication Display Requests
- Art Exhibition Space Rental Applications
- Business Listing on TMRT App
- Orientation and Mobility Training Card Borrowing for Visually Impaired Individuals



Scan the
QR code for
detailed
application
procedures.

Taichung MRT : Your Friendly Neighbor !